

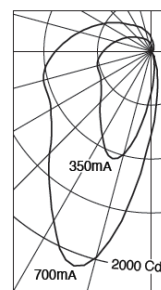
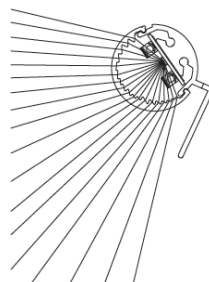
Harvard Club, Boston, MA | Photography: Courtesy of Emily O'Brien Photography

## Features

- Endless variety of configurations to suit any artwork or gallery
- Small, elegant adjustable hub hangers for any mounting condition
- Built-in visor and optional baffle for glare shielding
- Adjustable and lockable aiming
- Up to 1900 delivered lumens per foot
- Static white (2200K, 2700K, 3000K, 3500K), Dim-to-Warm (1800K-3000K), Tunable White (2700K-6500K) or RGBW

## Performance

Precisely extruded acrylic lens produces an asymmetric distribution ideal for illuminating vertical surfaces evenly from top to bottom



For LM79 and photometric reports, visit [thelightingquotient.com](http://thelightingquotient.com)  
L85[17k] > 104,000 hrs. @ 25°C per TM-21

Contact [sales@thelightingquotient.com](mailto:sales@thelightingquotient.com)

05-28-25

Union Made in the United States

elliptipar® from The Lighting Quotient™  
[TheLightingQuotient.com](http://TheLightingQuotient.com)

114 Boston Post Road, West Haven, Connecticut 06516, USA  
Voice 203-931-4455

art*i*

## PROJECT

## TYPE

**artZi**

1 2 3 4 5 6 7 8 9 10

## CATALOG NUMBER

### 1 STYLE

**artZi** = Linear Adjustable Portrait Luminaire

### 2 OUTPUT / POWER

**L** = Low output (3.3 watts per foot)  
**S** = Standard output (6.5 watts per foot)  
**H** = High output (13 watts per foot)

### 3 LENGTH

ORDER CODE	CTR-CTR LENGTH	LUMENS	INPUT WATTS*
08	8 inch (L,R,T)	1903	15
24	2'	3720	28
36	3'	5581	41
48	4'	7441	55
60	5'	9301	69
72	6'	11161	83

\*Based on 3000K, 90+CRI at high output  
 See [Scaled Performance Table](#)

### 4 MOUNTING

**D** = Linear center luminaire (specify center segment length in inches, with (2) 8 inch long end units, 16 inch long stems and hardware provided (see pg 3))  
**L** = Single 8 inch long unit offset left  
**R** = Single 8 inch long unit offset right  
**T** = Dual 8 inch long units with center single stem  
**X** = Custom mounting, specify details

### 5 FINISH

<b>02</b> = Semi-gloss White	<b>19</b> = Vista Black
<b>22</b> = Matte White	<b>26</b> = Greige
<b>06</b> = Dark Bronze	<b>27</b> = Flat Ivory White
<b>07</b> = Mercedes Silver	<b>28</b> = Charcoal
<b>08</b> = Semi-gloss Black	<b>29</b> = Platinum Gold
<b>13</b> = Matte Black	<b>30</b> = Krome
<b>15</b> = Metallic Silver	<b>31</b> = Triple Bronze
<b>17</b> = Champagne	<b>32</b> = Burnished Brass
<b>18</b> = Copper	

Some finishes are non-cancellable, consult factory

### 6 VOLTAGE

**M** = 120-277V Universal voltage input

### 7 OPTIONS (see Accessories Section for specifications)

**0** = No options  
**B** = Cross baffle, provides 25° lateral shielding  
**G** = Gradient backsplash reduction film

### 8 DESTINATION REQUIREMENT

**O** = CSA certified for U.S.  
**J** = CSA certified for Canada

### 9 COLOR TEMPERATURE / CRI

**922** = 2200K, 90+ CRI **D2W** = Dim-to-Warm 2200K-3000K, 90+ CRI, other CCTs available  
**927** = 2700K, 90+ CRI **TWH** = Tunable White; 2700K-6500K, 90+ CRI  
**930** = 3000K, 90+ CRI **RGB** = Color Tunable; RGBW with 3500K, 90+ CRI white  
**935** = 3500K, 90+ CRI

NOTE: Additional CCT and CRI options are available; consult factory.



Static



Dim2Warm



Tunable



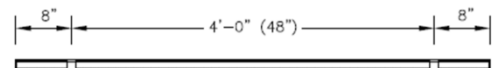
RGBW

### 10 DIMMING

**00** = Non-dimming  
**TD** = ERP forward or reverse phase 120V only, dimming 100%-6%, 120V phase controls by others  
**TC** = ERP 120-277V, dimming 100%-1%, **Casambi** wireless module  
**ZX** = 0-10V analog dimming 120-277V input, dimming 100%-1%, 0-10V controls by others  
**EL** = 0-10V eldoLED SOLOdrive, 120-277V input, dimming 100%-0.1%, 0-10V controls by others  
**ED** = DALI eldoLED SOLOdrive, 120-277V input, dimming 100%-0.1%, DALI controls by others  
**DZ** = D2W or TWH 2-Channel driver for use with 0-10V controls by others  
**DD** = D2W or TWH 2-Channel DALI driver (DALI controls by others)  
**DA** = RGBW 4-Channel DMX with **Casambi** wireless module  
**DM** = RGBW 4-Channel eldoLED LINEARdrive (DMX controls by others)

### Example (see page 3): artZi-S-48-D-17-M-0B-0-927-TD

**artZi** luminaire, standard output (6.5 watts per foot), 48 inch center-to-center of mounting hubs, luminaire flanked by 8 inch luminaires, champagne finish, 120V, 25° cross baffle, CSA certified for U.S., 2700K, 90+CRI, forward or reverse phase dimming driver, 120V phase controls by others.

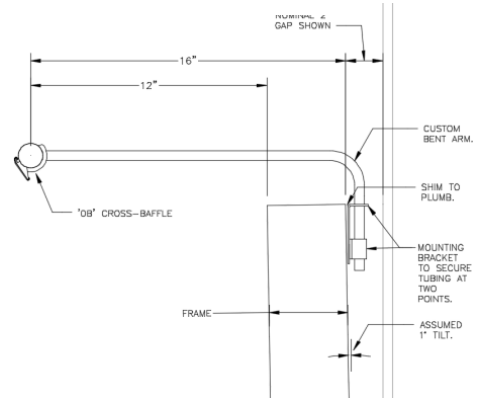


## Portrait Light with remote driver

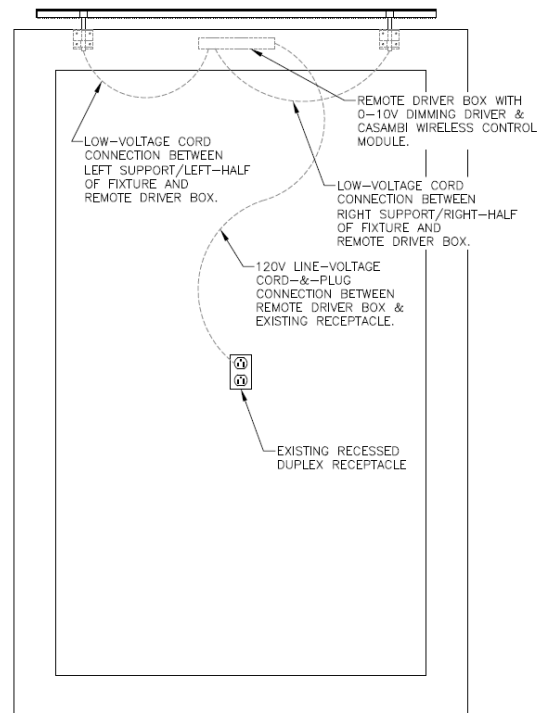
**Example:** = 4ft length with 12" arms



### Luminaire Side View



### Luminaire Front View with Remote Driver wiring



**Before**



**Illuminated by art*i***

