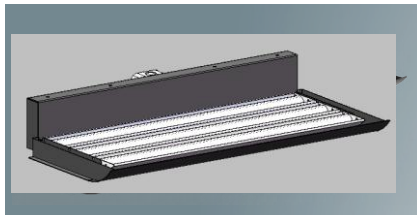
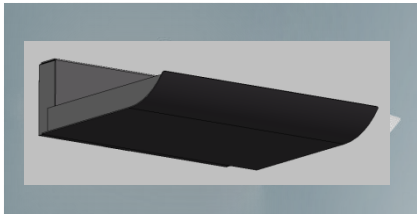


Style S421

Indoor linear uplight with
Integral Driver



Sahara West Library and Fine Arts Museum | Photography: Timothy Hursley

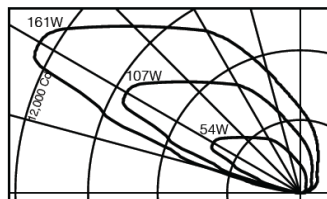


Features

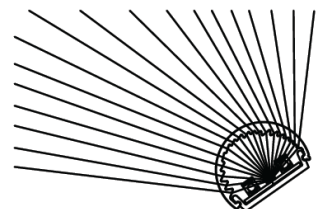
- Low profile uplight that packs a punch
- Adjustable and lockable aiming
- Up to 5,260 delivered lumens per foot per optical assembly
- All aluminum and stainless steel construction
- Static white (2200K, 2700K, 3000K, 3500K), Dim-to-Warm, Tunable White or RGBW

Performance

Precisely extruded acrylic lens produces an asymmetric distribution ideal for illuminating ceiling surfaces evenly.



L85(17k) > 104,000 hrs. @ 25°C per TM-21



For LM79 and photometric reports,
visit thelightingquotient.com

PROJECT

TYPE

S421

CATALOG NUMBER

1 2 3 4 5 6 7 8 9 10 11

1 STYLE

S421 = High Power Asymmetric Uplight **Integral** Drivers

2 OUTPUT

X = Xtra-high output (23 W/ft per optical assembly)

U = Ultra-high output (31 W/ft per optical assembly)

3 NUMBER OF OPTICAL ASSEMBLIES

1 = Single Optical Assembly

2 = Dual Optical Assemblies

3 = Three Optical Assemblies

4 LENGTH

24 = 26-3/4 inches (680mm)



36 = 38-3/4 inches (985mm)

48 = 50-3/4 inches (1290mm)

ORDER CODE	OPTICAL ASSEMBLIES	NOMINAL LENGTH	LUMENS	INPUT WATTS
U-1-24	1	24"	10,361	83
U-1-36	1	36"	15,542	124
U-1-48	1	48"	20,722	165
U-2-24	2	24"	20,722	165
U-2-36	2	36"	31,084	248
U-2-48	2	48"	41,445	331
U-3-24	3	24"	31,084	248
U-3-36	3	36"	46,625	372
U-3-48	3	48"	62,167	496

Based on Ultra-High Output @ 3500K, 90+CRI See [Scaled Performance Table](#)
Output and wattage may be programmed to suit project, contact factory

5 ENCLOSURE STYLE

C = Curved scoop	D = VWedge
	

Additional designs or custom designs available, consult factory

6 FINISH *non-cancellable/non-returnable

02 = Semigloss White	13 = Matte Black*	22 = Matte White*
06 = Dark Bronze*	15 = Metallic*	PL = Platinum*
07 = Silver*	17 = Champagne*	99 = Custom or RAL (Consult Rep.)
08 = Semigloss Black	18 = Copper*	

02	22*	PL*	07*	15*
08	13*	06*	18*	17*

7 VOLTAGE

M = 120-277V Universal voltage input

K = 347V voltage input

8 OPTIONS (see Accessories Section for specifications)

00 = No options

0B = Cross baffle, provides 25° lateral shielding

0G = Gradient Backsplash Reduction Film

0P = Natatorium (pool)

9 DESTINATION REQUIREMENT

O = CSA certified for U.S.

J = CSA certified for Canada

10 COLOR TEMPERATURE / CRI

927 = 2700K, 90+ CRI

930 = 3000K, 90+ CRI

935 = 3500K, 90+ CRI

940 = 4000K, 90+ CRI

D2W = Dim-to-Warm 2200K-3000K, 90+ CRI, other CCTs available

TWH = Tunable White; 2700K-6500K, 90+ CRI

RGB = Color Tunable; RGBW with 3500K, 90+ CRI white

NOTE: Additional CCT and CRI options are available; consult factory.



Static



Dim2Warm



Tunable



RGBW

11 DIMMING

00 = Non-dimming

ZX = 0-10V analog dimming 120-277V or 347V input, dimming 100%-1%, 0-10V controls by others

TD = ERP forward or reverse phase 120V only, dimming 100%-6%, 120V phase controls by others

EL = 0-10V eldoLED SOLOdrive, 120-277V input, dimming 100%-0.1%, 0-10V controls by others

ED = DALI eldoLED SOLOdrive, 120-277V input, dimming 100%-0.1%, DALI controls by others

DZ = D2W or TWH 2-Channel driver for use with 0-10V controls by others

DD = D2W or TWH 2-Channel DALI driver (DALI controls by others)

DA = RGBW 4-Channel DMX module (DMX controls by others)

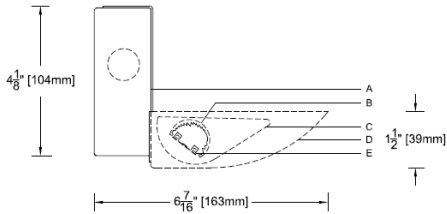
DM = RGBW 4-Channel eldoLED LINEARdrive (DMX controls by others)

Example: S421-U-2-24-W-02-M-0G-935-ZX

Low profile adjustable asymmetric uplight, ultra-high output, dual head, 24" long, wall mounted, semi-gloss white finish, 120-277V input, gradient backsplash reduction film, 3500K, 90+CRI, 0-10V dimming to 1% output

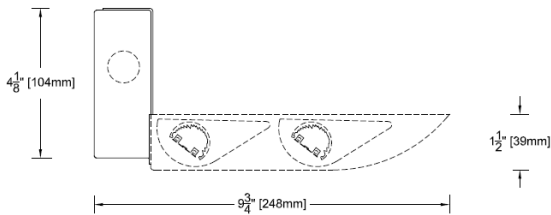
Lighting the Ceiling Indoor Linear with Remote Driver

End View 1-Head

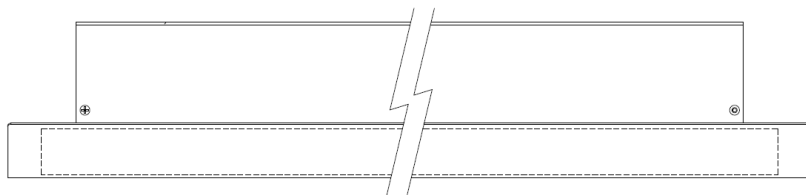
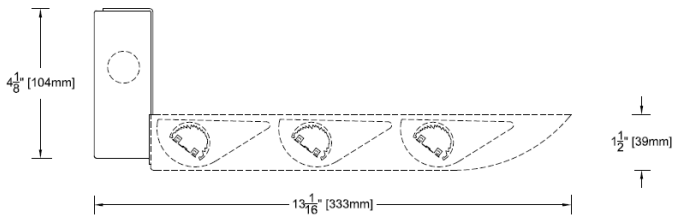


- A** Formed aluminum driver enclosure/mounting plate – creates reveal at wall (mounting fasteners by others)
- B** Precision extruded semi-diffuse asymmetric lens
- C** Extruded aluminum heat sink
- D** Formed aluminum decorative Ensconce® enclosure (choose wedge, scoop or tapered design)
- E** High efficacy LED array (90+ CRI standard)

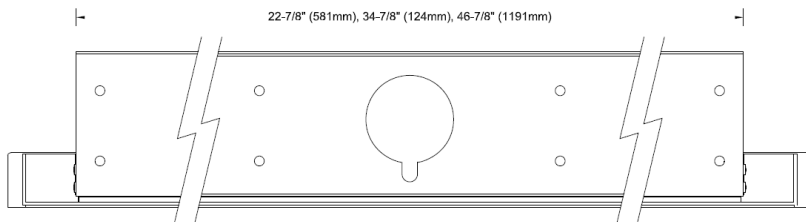
End View 2-Head



End View 3-Head



26-3/4" (679mm), 38-3/4" (984mm), 50-3/4" (1289mm)



22-7/8" (581mm), 34-7/8" (124mm), 46-7/8" (1191mm)

style S421



Specifications

Housing and Optic Assembly:

Extruded aluminum head sink(s) anodized for maximum emissivity. Precision extruded polymer refractive lens with optimal diffusion. Aluminum cord LED board with high efficiency LEDs

Finish:

Anodized extruded aluminum heat sink, aluminum reveal plates, cold rolled steel scone enclosure finished semi-gloss white (or specified color). Painted surfaces – 6 stage pretreatment and electrostatically applied thermoset polyester powder coating for a durable abrasion, fade and corrosion resistant finish. All hardware – stainless steel.

Mounting:

Aluminum mounting plate mounts to wall (fasteners by others). Yoke arms support optical assembly allowing aiming to maximize ceiling uniformity.

Electrical:

S421 furnished with electronic HPF thermally protected Class II driver(s) mounted in aluminum enclosure at wall mounting plate

See [MA-1357](#) for additional information.

See [MA-1303](#) for dimming compatibility.

Standard:

XXX certified for damp locations, 5 year warranty
Maximum ambient temperature 113°F (45°C)

Accessories

Uplight Pendant



Controls

LiQ luminaires are compatible with a wide variety of wired and wireless controls and sensors. See [Controls Information](#).

AWB-TP-DMX-0 = RGBW LED dimmer switch fits in a standard wall switch box and provides on/off control as well as fixed levels of dimmability. The dimmer switch has a color-selection wheel for thousands of color options, 10 dynamic color-changing/single color modes, 0-100% dimming, on/off controls, and 4 color-specific channel controls for red, green, blue, and white.

Additional wired and wireless controls available, see [Driver and Controls Information](#).

