

Style S321

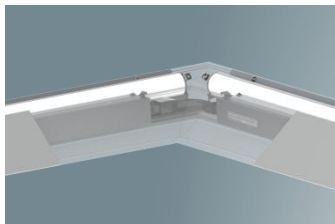
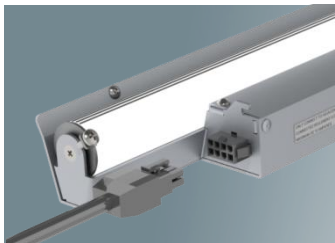
Indoor XtraSmall Cove,
Integral driver, quick connect

LiQ

... Lighting is Rising
The Lighting Quotient



St. John Armenian, Interior Dome, Southfield, Michigan, Lighting Design – Illuminart, Photography - Maconochie Photography

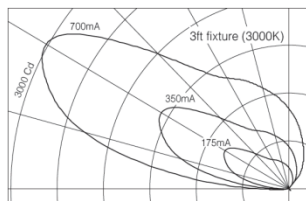


Features

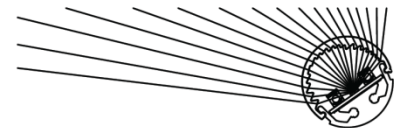
- Latching quick-connectors – easy installation and wiring
- For use with K5, LL5 LLSR7 cove framing
- Asymmetric distribution – uniform surface illumination
- Fully adjustable and lockable aiming
- Up to 1900 delivered lumens per foot, up to 152 lm/W
- Static white (2700K-4000K), Dim-to-Warm, Tunable White or RGBW
- All aluminum and stainless steel construction

Performance

Precisely extruded acrylic lens produces an asymmetric distribution ideal for illuminating ceiling evenly.



L85(17k) > 104,000 hrs. @ 25°C per TM-21



For LM79 and photometric reports,
visit thelightingquotient.com

PROJECT

TYPE

S321

CATALOG NUMBER

1 2 3 4 5 6 7 8 9 10

1 STYLE

S321 = Small Linear Concealed/cove light with latching cable connections

2 OUTPUT / POWER

L = Low output (3.3W per foot)

S = Standard output (6.5W per foot)

H = High output (13W per foot)

3 LENGTH

ORDER CODE	LENGTH	LUMENS	INPUT WATTS
2	2'	3713	28
3	3'	5570	41
4	4'	7427	55
5	5'	9283	69
6	6'	11140	83
7	7'	12997	96
8	8'	14853	110
9	9'	16710	124

Based on High Output 3500K, 90+CRI
See [Scaled Performance Table](#)

4 MOUNTING

S = Surface mounted into base of cove

5 FINISH

00 = Anodized optical housing/heat sink; mill finish brackets and driver enclosure; stainless steel luminaire hardware (natatorium use option is painted) Surface mounted into base of cove

02 = For damp / natatorium use. Driver enclosure and mounting brackets finished semi-gloss white, optical housing/heat sink are bright anodized

6 VOLTAGE

M = 120-277V Universal voltage input

7 OPTIONS

00 = No options

OP = Natatorium use: side arm, driver box pretreated and painted semi-gloss white

8 OUTPUT / POWER

0 = ETL listed for U.S.

J = ETL listed for Canada

9 COLOR TEMPERATURE / CRI

927 = 2700K, 90+ CRI

930 = 3000K, 90+ CRI

935 = 3500K, 90+ CRI

940 = 4000K, 90+ CRI

D2W = Dim-to-Warm 2200K-3000K, 90+ CRI, other CCTs available

TWH = Tunable White; 2700K-6500K, 90+ CRI

RGB = Color Tunable; RGBW with 3500K, 90+ CRI white

NOTE: Additional CCT and CRI options are available; consult factory.



Static



Dim2Warm



Tunable



RGBW

10 DIMMING

00 = Non-dimming

ZX = 0-10V analog dimming 120-277V or 347V input, dimming 100%-1%, 0-10V controls by others

TD = ERP forward or reverse phase 120V only, dimming 100%-6%, 120V ELV or Triac phase controls by others

EL = 0-10V eldoLED SOLOdrive, 120-277V input, dimming 100%-0.1%, 0-10V controls by others

ED = DALI eldoLED SOLOdrive, 120-277V input, dimming 100%-0.1%, DALI controls by others

DZ = D2W or TWH 2-Channel driver for use with 0-10V controls by others

DD = D2W or TWH 2-Channel DALI driver (DALI controls by others)

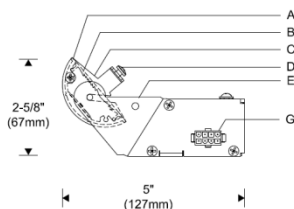
DA = RGBW 4-Channel DMX module (DMX controls by others) DM = RGBW 4-Channel eldoLED LINEARdrive (DMX controls by others)

Lighting the Ceiling Indoor Linear Cove with Integral Driver and Quick Connects

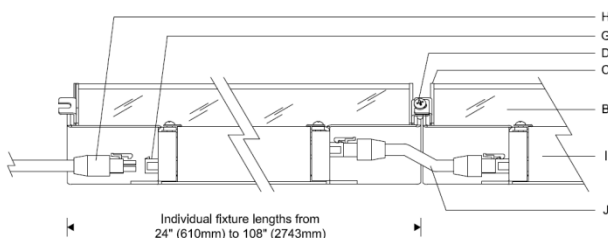
Optical Assembly 1:2 Scale



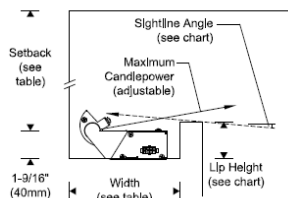
End View 1:4 Scale



Front View 1:4 Scale



Cove 1:8 Scale



Cove Dimensions

(max candlepwer aimed at 15° above horiz.)

Sightline	0° (horiz. cutoff)	5°	10°
Width (inside)	6-1/4" (159mm)	7-1/2" (190mm)	7-1/2" (190mm)
Lip (inside)	2-3/16" (56mm)	1-5/8" (41mm)	1-1/2" (38mm)
Setback	Recommended minimum; 12" (305mm) for 350mA, 18" (457mm) for 700mA		

- A** Extruded aluminum heat sink/housing
- B** Extruded acrylic beam shaping lens
- C** Stainless steel end plates with interlocking tabs
- D** Rotation locking tab with locking set screw
- E** Aluminum side arm
- F** Constant current LED board
- G** Cord connection port (8-conductors)
- H** Feeder cable 10 feet (ordered separately)
- I** Extruded aluminum driver channel and cover
- J** Jumper cable 6 inch (ordered separately)

Specifications

Housing and Optic Assembly:

Extruded aluminum heat sink/optic housing. Formed aluminum driver housing and removable cover.
Precision extruded polymer refractive lens with optimal diffusion.

Finish:

Optic assembly – anodized aluminum. Side arms and driver channel – mill finished aluminum or painted semi-gloss white for natatorium option. Painted surfaces receive a 6-stage pretreatment process prior to electrostatically applied thermoset polyester powder coating for a durable abrasion, fade and corrosion resistant finish, complies with UL1598A Marine grade finish. All hardware – stainless steel or nickel plated brass.

Mounting:

Lay-in installation, side arm with mounting tabs are fastened to base of cove (fasteners by others). Luminaires can be mounted individually or joined together to form a continuous straight row or can be mounted side by side in a circular/curved cove. Optical assembly aiming is adjustable and is fixed in position by rotational locking screws at each side arm. When mounting in continuous row, assemblies lock together allowing all in the row to be aimed together.

Fixture Weight: 1.7 lb/ft (2.5 kg/m).

Electrical:

Feeder and jumper cables are ordered separately.
Order (1) feeder cable for each connected row of 10 amps or less.
Order jumper cables between luminaires as needed. 8-conductor feeder cable connected to 120-277V supply wiring and controls by others. Electronic HPF thermally protected Class 2 driver mounted in extruded aluminum driver channel. Drivers are accessible for replacement. For complete driver specifications, see website, reference document [MA-1303](#).
Optional, compatible dimming controls (by others).
See website for dimming compatibility and specifications.

Standard:

ETL listed for U.S. and Canada for damp location.
5 year warranty, maximum ambient temperature 45°C (113°F).

Required Power Cables

Specify Quantities



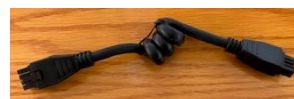
LFC-S321-120-0

10 foot feeder cable



JC-S321-12-0

Jumper, coiled 12 inch



JS-S321-06-0

Jumper, straight 6 inch



Controls

LiQ luminaires are compatible with a wide variety of wired and wireless controls and sensors. See [Controls Information](#).

AWB-TP-DMX-0 = RGBW LED dimmer switch fits in a standard wall switch box and provides on/off control as well as fixed levels of dimmability. The dimmer switch has a color-selection wheel for thousands of color options, 10 dynamic color-changing/single color modes, 0-100% dimming, on/off controls, and 4 color-specific channel controls for red, green, blue, and white.

Additional wired and wireless controls available, see [Driver and Controls Information](#).

