

# style S204

Large indoor semi-recessed  
adjustable, integral driver

LiQ

... Lighting IQ Rising  
The Lighting Quotient

elliptipar®



GSky Living Wall Plano, TX | Lighting Design: KGM | Photography: GSky plant systems

## Features

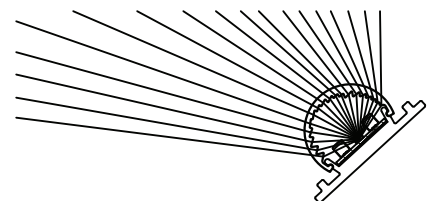
- Up to 17,000 delivered lumens
- All aluminum and stainless steel construction
- Fully adjustable and lockable aiming with aiming index
- Semi-recessed mounting
- Static white (2700K, 3000K, 3500K, 4000K)
- Dim-to-Warm, Tunable White, RGBW
- Serviceable drivers and light engines

## Performance

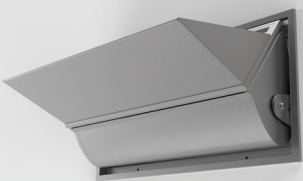
Precisely extruded acrylic lens produces an asymmetric distribution ideal for illuminating vertical horizontal surfaces evenly.



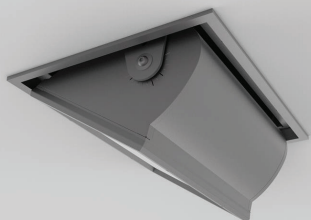
L85(17k) > 104,000 hrs. @ 25°C per TM-21  
L85(9k) > 54,000 hrs. @ 25°C per TM-21



For LM79 and photometric reports,  
visit [thelightingquotient.com](http://thelightingquotient.com)



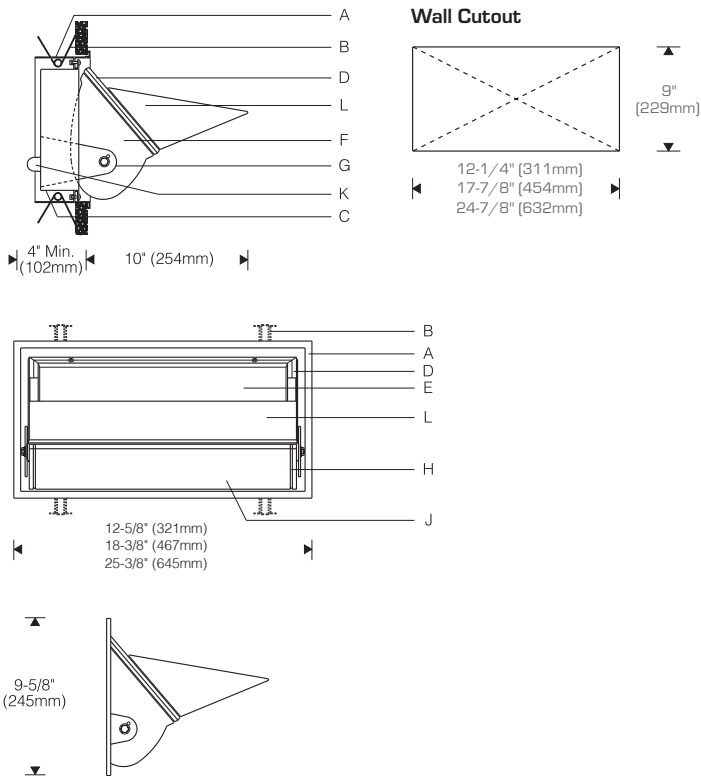
Lighting the Ceiling



Lighting the Wall

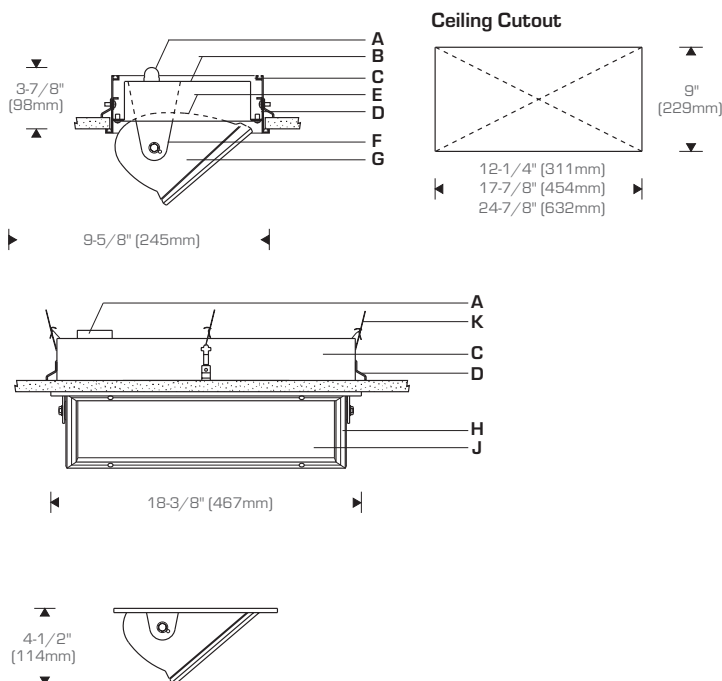
PROJECT		TYPE																													
<div> <div>S</div> <div>2</div> <div>0</div> <div>4</div> <div></div> <div></div> <div></div> <div></div> <div></div> <div></div> <div></div> </div>		<div> <div>1</div> <div>2</div> <div>3</div> <div>4</div> <div>5</div> <div>6</div> <div>7</div> <div>8</div> <div>9</div> <div>10</div> </div>																													
		CATALOG NUMBER																													
<b>1 STYLE</b> <b>S204</b> = Large indoor semi-recessed adjustable, integral driver		<b>7 OPTIONS</b> <i>(see Accessories Section for specifications)</i> <b>00</b> = No options <b>OP</b> = <u>Natatorium</u> (pool) use <b>VO</b> = Cutoff visor (recommended for uplighting) <b>VP</b> = Cutoff visor, <u>natatorium</u> (pool) use <b>XX</b> = For modifications not listed, include detailed description. Consult factory prior to specification.																													
<b>2 OUTPUT / POWER</b> <b>S</b> = Standard output <b>H</b> = High output		<b>8 DESTINATION REQUIREMENT</b> <b>O</b> = CSA certified for U.S. <b>J</b> = CSA certified for Canada																													
<b>3 LENGTH</b> <table border="1"> <thead> <tr> <th>ORDER CODE</th> <th>LENGTH</th> <th>LUMENS</th> <th>INPUT WATTS</th> </tr> </thead> <tbody> <tr> <td>S-12</td> <td>12"</td> <td>2927</td> <td>24</td> </tr> <tr> <td>H-12</td> <td>12"</td> <td>5585</td> <td>51</td> </tr> <tr> <td>S-18</td> <td>18"</td> <td>5854</td> <td>49</td> </tr> <tr> <td>H-18</td> <td>18"</td> <td>11170</td> <td>102</td> </tr> <tr> <td>S-24</td> <td>24"</td> <td>8781</td> <td>73</td> </tr> <tr> <td>H-24</td> <td>24"</td> <td>16756</td> <td>153</td> </tr> </tbody> </table> <p><i>Based on 3500K, 90+ CRI See <a href="#">Scaled Performance Table</a></i></p>		ORDER CODE	LENGTH	LUMENS	INPUT WATTS	S-12	12"	2927	24	H-12	12"	5585	51	S-18	18"	5854	49	H-18	18"	11170	102	S-24	24"	8781	73	H-24	24"	16756	153	<b>9 COLOR TEMPERATURE / CRI</b> <b>927</b> = 2700K, 90+ CRI <b>D2W</b> = Dim-to-Warm 2200K-3000K, 90+ CRI, other CCTs available <b>930</b> = 3000K, 90+ CRI <b>TWH</b> = Tunable White; 2700K-6500K, 90+ CRI <b>935</b> = 3500K, 90+ CRI <b>RGB</b> = Color Tunable; RGBW with 3500K, 90+ CRI white <b>940</b> = 4000K, 90+ CRI	
ORDER CODE	LENGTH	LUMENS	INPUT WATTS																												
S-12	12"	2927	24																												
H-12	12"	5585	51																												
S-18	18"	5854	49																												
H-18	18"	11170	102																												
S-24	24"	8781	73																												
H-24	24"	16756	153																												
<b>4 MOUNTING</b> <b>T</b> = Overlapping Trim		<p><b>NOTE:</b> Additional CCT and CRI options are available; consult factory.</p> <div> <div> <p>Static</p> </div> <div> <p>Dim2Warm</p> </div> <div> <p>Tunable</p> </div> <div> <p>RGBW</p> </div> </div>																													
<b>5 FINISH</b> * non-cancellable/non-returnable <b>02</b> = Semigloss White <b>13</b> = Matte Black* <b>22</b> = Matte White* <b>06</b> = Dark Bronze* <b>15</b> = Metallic* <b>PL</b> = Platinum* <b>07</b> = Silver* <b>17</b> = Champagne* <b>99</b> = Custom or RAL (Consult Rep.) <b>08</b> = Semigloss Black <b>18</b> = Copper*																															
<div> <div>02</div> <div>22*</div> <div>PL*</div> <div>07*</div> <div>15*</div> </div>																															
<div> <div>08</div> <div>13*</div> <div>06*</div> <div>18*</div> <div>17*</div> </div>																															
<b>6 VOLTAGE</b> <b>M</b> = 120-277V Universal voltage input <b>K</b> = 347V input		<b>10 DIMMING</b> <b>00</b> = Non-dimming <b>ZX</b> = 0-10V analog dimming 120-277V or 347V input, dimming 100%-1%, 0-10V controls by others <b>TD</b> = ERP forward or reverse phase 120V only, dimming 100%-6%, 120V phase controls by others <b>EL</b> = 0-10V eldoLED SOLOdrive, 120-277V input, dimming 100%-0.1%, 0-10V controls by others <b>ED</b> = DALI eldoLED SOLOdrive, 120-277V input, dimming 100%-0.1%, DALI controls by others <b>DZ</b> = D2W or TWH 2-Channel driver for use with 0-10V controls by others <b>DD</b> = D2W or TWH 2-Channel DALI driver (DALI controls by others) <b>DA</b> = RGBW 4-Channel DMX module (DMX controls by others) <b>DM</b> = RGBW 4-Channel eldoLED LINEARdrive (DMX controls by others)																													

## Lighting the Ceiling Large indoor semi-recessed adjustable, integral driver



- A** Extruded aluminum mounting/trim frame
- B** Spring clips (4 provided)
- C** Aluminum back box
- D** Mitered extruded aluminum door frame with silicone gasket
- E** Micro-prismatic tempered glass lens
- F** Die-cast aluminum end plates
- G** Aluminum yoke arms
- H** Aluminum reveal plates (black)
- J** Specular extruded aluminum reflector
- K** Conduit connector
- L** Solid cutoff visor (included)

## Lighting the Wall Large indoor semi-recessed adjustable, integral driver



- A** Conduit connector
- B** Aluminum back box
- C** Extruded aluminum mounting/trim frame
- D** Spring clips (4 provided)
- E** Specular extruded aluminum reflector
- F** Aluminum yoke arms
- G** Die-cast aluminum end plates
- H** Mitered extruded aluminum door frame with silicone gasket
- J** Microprismatic tempered glass lens
- K** Supplemental support wires (by others)

## Specifications

### Optic Assembly:

Two-piece extruded aluminum heat sink housing and light engine. Exterior heat sink anodized for maximum emissivity. Removable interior extrusion treated to maximize thermal conductivity. Precision formed asymmetric optical light bar of high temperature, water-clear acrylic. Tempered micro-prismatic glass lens with elliptical distribution holographic diffuser; maximizes lateral distribution without disturbing asymmetric forward throw.

### Finish:

Painted surfaces – 6 stage pretreatment and electrostatically applied thermoset polyester powder coating for a durable abrasion, fade and corrosion resistant finish. Extruded aluminum heat sink/housing, canopy, yoke, door frame and decorative end plates are finished in semigloss white. All luminaire hardware is stainless steel; mounting hardware is zinc or electroplated steel.

### Mounting (Lighting the Ceiling):

Mounting/trim frame installs into finished wall. Clips provided for wall materials (drywall, plaster) up to 1-3/4" (44mm) thick.

### Mounting (Lighting the Wall):

Mounting/trim frame installs from below finished ceiling. Retrofits into existing non-accessible ceilings. Spring clips provided for rigid ceilings (drywall, plaster) up to 1-3/4" (44mm) thick. Supplemental support wires, bar hangers, etc. (by others) required for accessible ceilings. Where wire suspension is prohibited, order accessory universal mounting brackets for use with 1/2" EMT, 1-1/2" lathing or C channel (by others).

### Electrical:

Integral electronic HPF constant current driver. For complete driver specifications, see website, reference document [MA-1303](#). Access plate on top of back box with two 1/2" knockouts for supply wiring. Internal splice compartment allows for access to splices below ceiling.

### Standard:

UL listed or CSA certified for dry locations; specify **OP** option for damp locations. 5 year warranty, maximum ambient temperature 45°C (113°F).

## Required Mounting Hangers

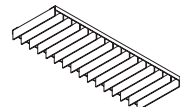
### Accessories

Order separately. See Accessories Section for specifications.

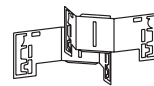
AE V 000 = External vertical blade baffle, black

2 = 25° shielding  
4 = 45°

C = 12" fixtures  
D = 17" fixtures  
F = 24" fixtures



ASRBKT00 = Universal mounting brackets (set of two), accepts 1/2" EMT, 1-1/2" lathing, C channel or bar hangers (by others)



## Controls

LiQ luminaires are compatible with a wide variety of wired and wireless controls and sensors. See [Controls Information](#).

**AWB-TP-DMX-0** = RGBW LED dimmer switch fits in a standard wall switch box and provides on/off control as well as fixed levels of dimmability. The dimmer switch has a color-selection wheel for thousands of color options, 10 dynamic color-changing/single color modes, 0-100% dimming, on/off controls, and 4 color-specific channel controls for red, green, blue, and white.

Additional wired and wireless controls available, see [Driver and Controls Information](#).

