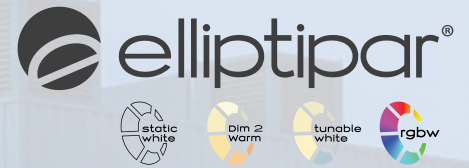


# Style S150

Small outdoor, remote driver

**LiQ**  
... Lighting IQ Rising  
The Lighting Quotient



NFTA Freedom Wall, Buffalo, NY | Lighting Design: Lightspec



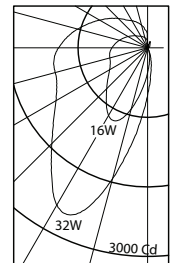
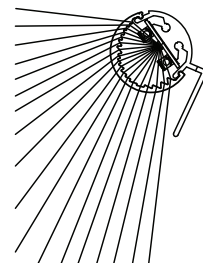
Lighting the Wall

## Features

- Inconspicuous low profile - lights entire wall evenly without emphasizing surface imperfections
- Built in visor provides shielding of glare from below
- Surface or cantilever mounting upwards or down
- Optional baffle or sawtooth shielding options

## Performance

Precisely extruded acrylic lens produces an asymmetric distribution ideal for illuminating vertical surfaces evenly from top to bottom.



For LM79 and photometric reports, visit [thelightingquotient.com](http://thelightingquotient.com)

L85(17k) > 104,000 hrs.  
@ 25°C per TM-21

PROJECT	TYPE									
---------	------	--	--	--	--	--	--	--	--	--

S	1	5	0							
	1	2	3	4	5	6	7	8	9	10

CATALOG NUMBER

## 1 STYLE

**S150** = Xtra small fluted yoke mount LED with remote driver

## 2 OUTPUT / POWER

**S** = Standard output  
**H** = High output

## 3 LENGTH

ORDER CODE	LENGTH	LUMENS	INPUT WATTS
S-08	08"	939	7
H-08	08"	1717	15
S-14	14"	1877	15
H-14	14"	3435	30

Based on 3500K, 90+ CRI See [Scaled Performance Table](#)

## 4 MOUNTING

**E** = Yoke with flat canopy over recessed outlet box (by others)  
**S** = Yoke with flat canopy and round outdoor surface junction box for direct feed from sides or top finish to match fixture.  
**X** = Yoke mounted for use with ACJ cantilever

## 5 FINISH \* non-cancellable/non-returnable

**02** = Semigloss White    **08** = Semigloss Black    **18** = Copper\*  
**06** = Dark Bronze\*    **15** = Metallic\*    **99** = Custom or RAL (Consult Rep.)  
**07** = Silver\*    **17** = Champagne\*

02	07*	15*	08	06*	18*	17*
----	-----	-----	----	-----	-----	-----

## 6 VOLTAGE

**M** = 120-277V Universal voltage input  
**K** = 347V input

## 7 OPTIONS (see Accessories Section for specifications)

**00** = No options  
**0D** = Remote indoor driver for dry location  
**0B** = Cross baffle, provides 25° lateral shielding  
**0S** = Backsplash shield (adjustable)  
**BD** = Cross baffle with remote indoor driver  
**SD** = Backsplash shield with remote indoor driver

## 8 DESTINATION REQUIREMENT

**O** = CSA certified for U.S.  
**J** = CSA certified for Canada

## 9 COLOR TEMPERATURE / CRI

**930** = 3100K\*, 90+ CRI    **D2W** = Dim-to-Warm 2200K-3000K, 90+ CRI, other CCTs available  
**935** = 3700K\*, 90+ CRI  
**940** = 4500K\*, 90+ CRI    **TWH** = Tunable White; 2700K-6500K, 90+ CRI  
\*CCT after potting  
**RGB** = Color Tunable; RGBW with 3500K, 90+ CRI white

**NOTE:** Additional CCT and CRI options are available; consult factory.



Static



Dim2Warm



Tunable



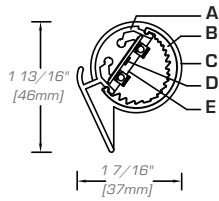
RGBW

## 10 DIMMING

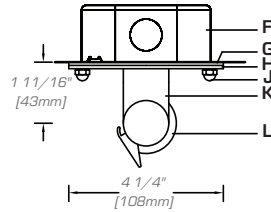
**00** = Non-dimming  
**ZX** = 0-10V analog dimming 120-277V or 347V input, dimming 100%-1%, 0-10V controls by others  
**TD** = ERP forward or reverse phase 120V only, dimming 100%-6%, 120V phase controls by others  
**EL** = 0-10V eldoLED SOLOdrive, 120-277V input, dimming 100%-0.1%, 0-10V controls by others  
**ED** = DALI eldoLED SOLOdrive, 120-277V input, dimming 100%-0.1%, DALI controls by others  
**DZ** = D2W or TWH 2-Channel driver for use with 0-10V controls by others  
**DD** = D2W or TWH 2-Channel DALI driver (DALI controls by others)  
**DA** = RGBW 4-Channel DMX module (DMX controls by others)  
**DM** = RGBW 4-Channel eldoLED LINEARdrive (DMX controls by others)

## Lighting the Vertical Small outdoor, remote driver

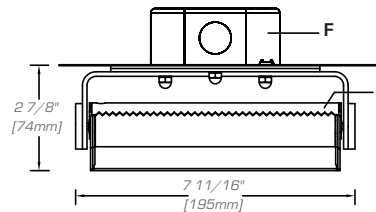
**Optical Assembly**



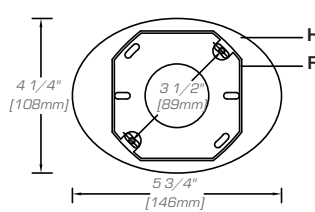
**E-Mount**



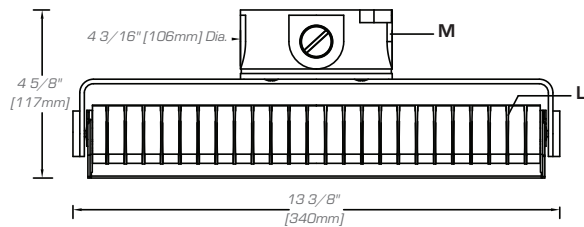
**Front View (28-LED)**



**E-Mount Oval Mounting Plate**



**S-Mount with Round Junction Box and Baffle (56-LED)**



- B** Extruded aluminum heat sink/housing
- C** Extruded semi-diffuse lens
- D** Die-cast aluminum end plate
- E** Linear LED PCB with mid-power LEDs
- F** Clear silicone encapsulant
- G** Recessed junction box (by others)
- H** Oval mounting plate (**E**-mount)
- I** Oval canopy (**E**-mount)
- K** Stainless steel acorn nuts
- L** Formed aluminum yoke
- M** Optical cross baffle
- N** Round surface junction box (**S**-mount)
- O** Optional sawtooth shield

## Specifications

### Optical Assembly

Extruded aluminum heat sink/optic housing. Exterior heat sink anodized for maximum emissivity. Precision extruded polymer refractive lens with optimal dispersion.

### Finish

Extruded aluminum heat sink/housing, aluminum reveal plates and end plates finished white, black or custom color. Painted surfaces 6-stage pretreatment and electrostatically applied thermoset polyester powder coating for a durable abrasion, fade and corrosion resistant finish. All hardware stainless steel.

### Mounting

**E**-mount formed aluminum yoke with flat canopy mounts over recessed outlet box (by others).

**S**-mount formed aluminum yoke with flat canopy and round outdoor surface box for direct feed from sides or rear.

**X**-mount formed aluminum yoke mounts to pendant or cantilever accessory (ordered separately).

Fixture weight: 28 LED unit = 1.5 lbs (0.68 kg); 56 LED unit = 2.0 lbs (0.91 kg)

### Electrical

Luminaire furnished with 10 foot (3048mm) of low voltage cable for connection to remote driver. Electronic HPF thermally protected Class II driver mounted in weather-proof enclosure or optional indoor dry enclosure. For complete driver specifications, see website, reference documents [MA-1303](#) and [MA-1501](#).

### Standard

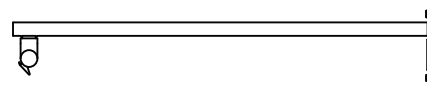
CSA certified for wet locations Dual rated IP66 and IP67  
5 year warranty  
Maximum ambient temperature 45°C (113°F).

## Required Mounting Hangers

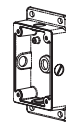
### Lighting The Vertical

Required **ACJ** cantilever hanger for mount are ordered and priced separately. See installation sheets on website.

**ACJ** **30** = Cantilever, 30" (760mm) setback (for use with **X**-mount)  
**1** = U.S.  
**K** = Canada  
**5** Finish



**AMS** **000** = Surface mount splice box for use with ACJ cantilever  
**5** Finish



## Controls

LiQ luminaires are compatible with a wide variety of wired and wireless controls and sensors. See [Controls Information](#).

**AWB-TP-DMX-0** = RGBW LED dimmer switch fits in a standard wall switch box and provides on/off control as well as fixed levels of dimmability. The dimmer switch has a color-selection wheel for thousands of color options, 10 dynamic color-changing/single color modes, 0-100% dimming, on/off controls, and 4 color-specific channel controls for red, green, blue, and white.

Additional wired and wireless controls available, see [Driver and Controls Information](#).

